



Empowered lives.
Resilient nations.



The UNDP Low Emission Capacity Building (LECB) Programme: A global initiative to support mitigation action – LEDS, NAMAs & MRV



LECB Programme – Overview



Objective: Build capacities to design and implement Low Emission Development through national mitigation actions in the public and/or private sectors

Period: January 2011 - December 2016

Scale: 25 countries

Sectors: Energy, transport, industrial processes, waste, agriculture, and LULUCF

Industries: Cement, iron & steel, fertilizers, mining, chemicals

Deliverables:

- 13 LEDS
- 60 NAMAs (and associated MRV systems)
- 17 national GHG inventory systems

Donors: European Commission, German Government (BMU), Australian Government

Range of countries (by region, level of development) enhances learning



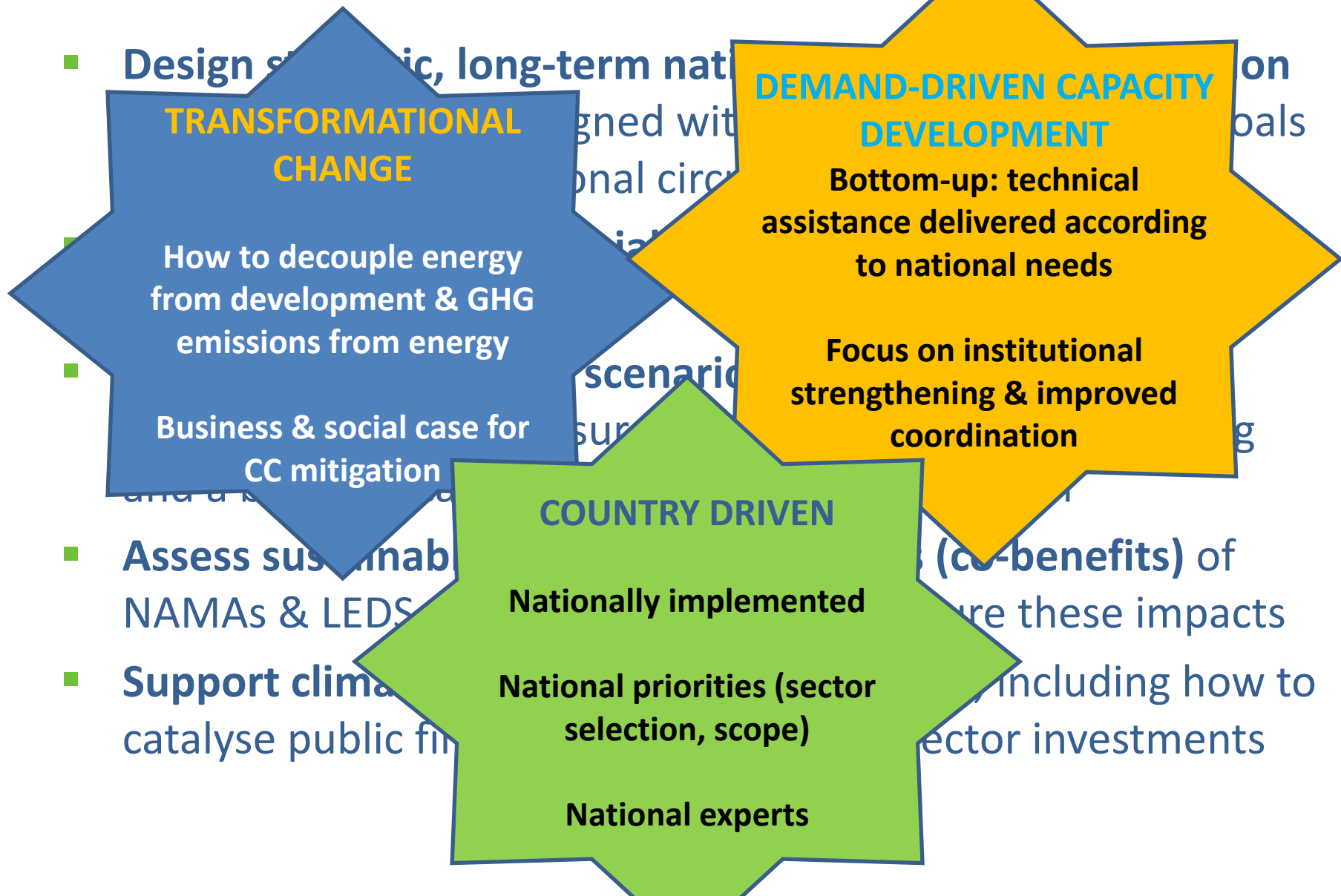
Phase	Africa	Asia	LAC	Arab States	Europe/CIS
Phase 1 (2011)	DRC	Philippines	Argentina	Egypt	
	Kenya	China	Chile	Morocco	
	Uganda		Colombia		
	Zambia		Ecuador		
			Mexico		
			Peru		
Phase 2 (2012)	Ghana	Bhutan	Costa Rica	Lebanon	Moldova
	Tanzania	Indonesia	Trinidad & Tobago		
		Malaysia			
		Thailand			
		Vietnam			
Total #	6	7	8	3	1

Thematic areas of focus: Asia



Country	GHG INV System	NAMAs	LEDS	MRV	Sectors
Bhutan	X	X	X	X	Transport, waste, housing , industry
China	X				Industry
Indonesia		X	X	X	Transport, industry
Malaysia	X	X		X	Industry
Philippines	X	X	X	X	Transport, waste, agriculture, industry
Thailand	X	X		X	Transport, waste, industry
Vietnam		X		X	Industry

LECBP builds national capacities to define & deliver long-term, transformational vision



Value-added of a global programme for addressing capacity development barriers



Creates a culture of global exchange and peer-to-peer learning

- Global support unit seeks insights from participating countries on their approaches & experiences to emerging issues
- Peer-to-peer learning via webinars, e-discussions, thematic working groups, annual global meetings & bilateral technical assistance

Coordinated, targeted technical assistance

- Emerging technical assistance needs can be identified and addressed through technical briefs, targeted backstopping (in-country and on-line), and thematic trainings

Drives results-based knowledge sharing

- Sharing of best practices/lessons learned via e-discussions, webinars, and quarterly newsletters
- Information sharing via www.lowemissiondevelopment.org & monthly email “round-ups” of events